

LES FOLIES D'ESPAGNE,

VARIÉES,

ET UN MENUET

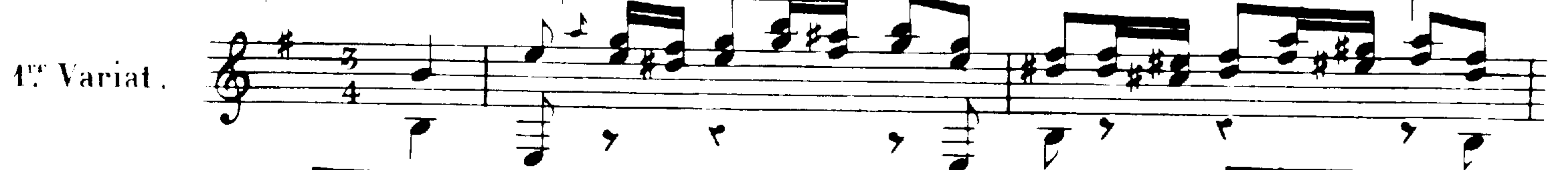
COMPOSÉ POUR GUITARE SEULE,

Par FERDINANDO SOR.

(Œuvre 15. ~~~~~ Prix: 2^{fr} 40^c

A Paris, au magasin de Musique de MEISSONNIER, Galerie des Panoramas, N^o 15,
et à Toulouse, chez MEISSONNIER aîné et Compagnie, M^d de Musique, rue St. Rome N^o 28.

THÈME.



4^{me} Variat.

Musical score for the 4^{me} Variat. The score is written for two systems, each with two staves. The first system includes a treble clef, a key signature of one sharp (F#), and a 3/4 time signature. The music consists of a melodic line in the upper staff and a bass line in the lower staff, with various rhythmic patterns and articulations. The second system continues the piece with similar notation and dynamics.

Andante.

MENUE T.

Musical score for the Minuet. The score is written for two systems, each with two staves. The first system includes a treble clef, a key signature of two sharps (F# and C#), and a 3/4 time signature. The music is marked 'Andante' and includes dynamics such as 'p' (piano) and 'dol:' (dolce). The second system continues the piece with similar notation and dynamics.

2^{me} Variat.

The first staff of the 2^{me} variation is written in treble clef with a 3/4 time signature. It begins with a half rest followed by a quarter note G4. The melody consists of eighth and quarter notes, often beamed together. The accompaniment is primarily chords, with some single notes in the bass line. A dynamic marking of *p* (piano) is present.

The second staff continues the melodic and harmonic development. It features similar rhythmic patterns and chordal structures as the first staff, with some chromatic movement in the bass line. A dynamic marking of *p* is also present.

The third staff shows further melodic and harmonic progression. The melody continues with eighth and quarter notes, while the accompaniment provides harmonic support with chords and bass notes. A dynamic marking of *p* is present.

The fourth staff concludes the 2^{me} variation. It features a final melodic phrase and a cadence in the bass line. A dynamic marking of *p* is present.

3^{me} Variat.

The first staff of the 3^{me} variation is written in treble clef with a 3/4 time signature. It begins with a half rest followed by a quarter note G4. The melody consists of eighth and quarter notes, often beamed together. The accompaniment is primarily chords, with some single notes in the bass line. A dynamic marking of *p* (piano) is present.

The second staff continues the melodic and harmonic development. It features similar rhythmic patterns and chordal structures as the first staff, with some chromatic movement in the bass line. A dynamic marking of *p* is also present.

The third staff shows further melodic and harmonic progression. The melody continues with eighth and quarter notes, while the accompaniment provides harmonic support with chords and bass notes. A dynamic marking of *p* is present.

The fourth staff concludes the 3^{me} variation. It features a final melodic phrase and a cadence in the bass line. A dynamic marking of *p* is present.