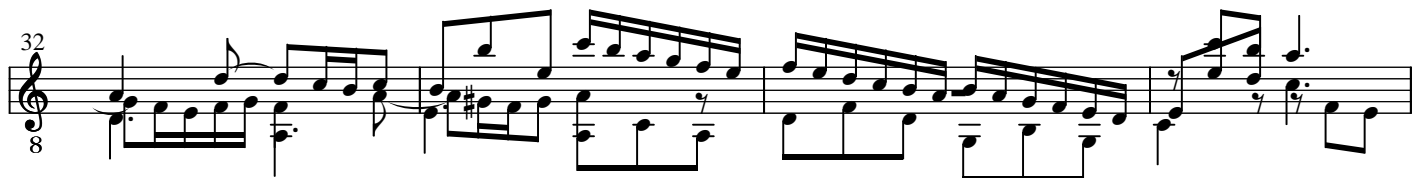
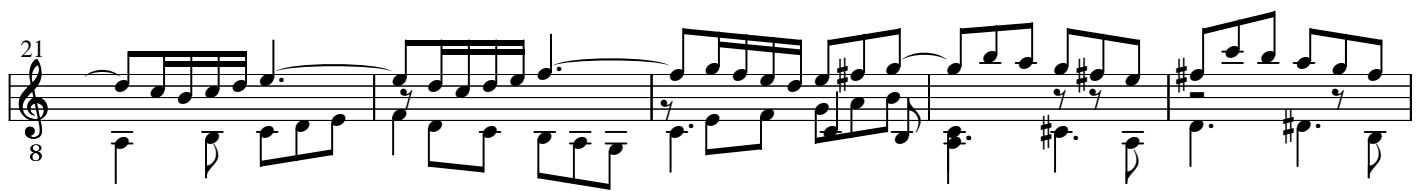
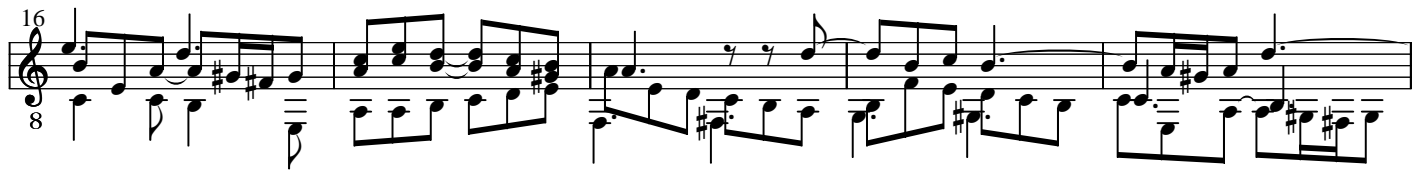
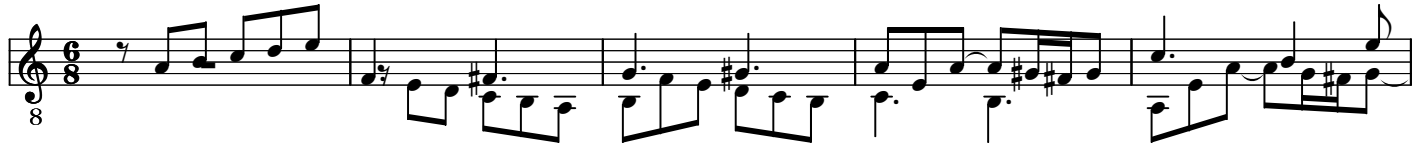


Suite BWV 997, a-Moll

Fuga



36

8

41

8

46

8

51

8

54

8

58

8

62

8

66

8

69  
8

72  
8

75  
8

78  
8

82  
8

86  
8

89  
8

92  
8

96

8

99

8

103

8

106

8

110

8

114

8

119

8

124

8

129

8

This system contains measures 129 through 133. The music is written in treble clef with a key signature of one sharp (F#). The melody in the upper voice is characterized by eighth-note patterns and slurs. The bass line consists of quarter and eighth notes, often with rests. A common time signature '8' is located at the bottom left of the system.

134

8

This system contains measures 134 through 139. The melodic line continues with eighth-note runs and slurs. The bass line features a mix of quarter and eighth notes. A common time signature '8' is located at the bottom left of the system.

140

8

This system contains measures 140 through 143. The melody maintains its eighth-note texture with various slurs. The bass line continues with rhythmic accompaniment. A common time signature '8' is located at the bottom left of the system.

144

8

This system contains measures 144 through 148. The melodic line shows some rests and slurs. The bass line continues with quarter and eighth notes. A common time signature '8' is located at the bottom left of the system.

149

8

This system contains measures 149 through 153. The melody features a prominent eighth-note run in the first measure, followed by slurred phrases. The bass line provides a steady accompaniment. A common time signature '8' is located at the bottom left of the system.

154

8

This system contains measures 154 through 158. The melodic line concludes with a final slurred phrase. The bass line ends with a few final notes. A common time signature '8' is located at the bottom left of the system.