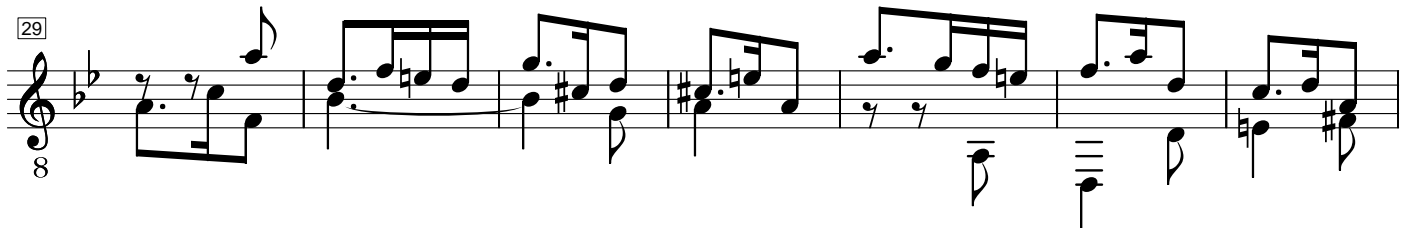
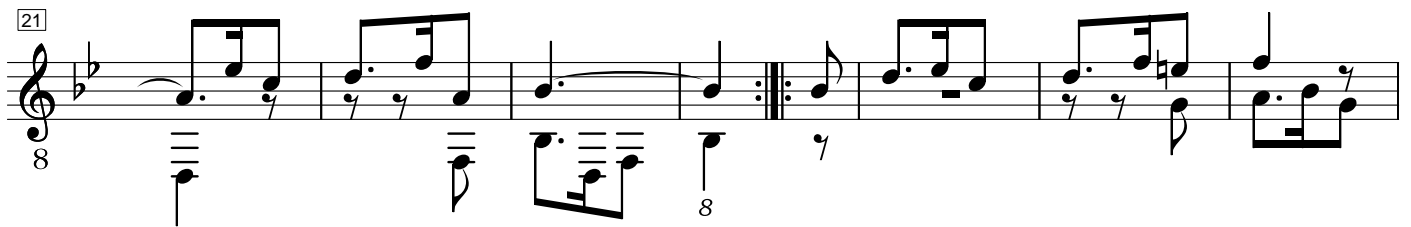
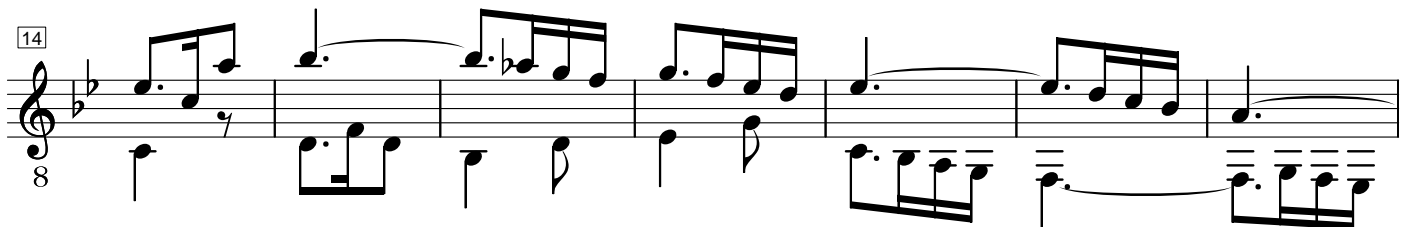
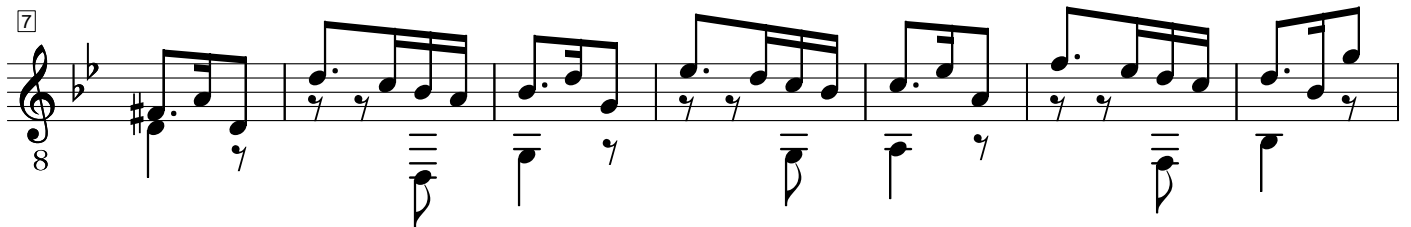
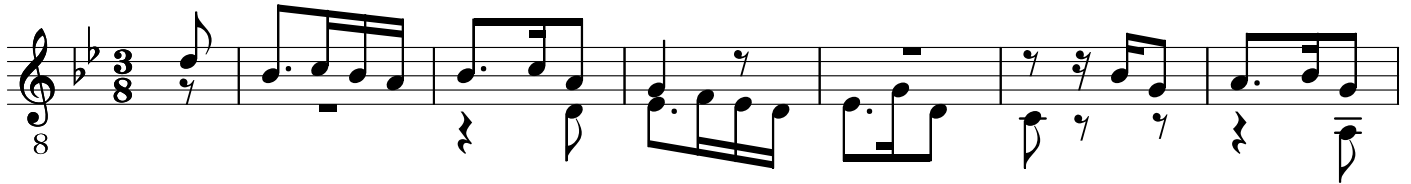


7. Gigue

BWV 995

J. S. Bach



36

8

8

Musical notation for measures 36-42, featuring a treble clef, a key signature of one flat, and a common time signature. The notation includes a melodic line with eighth and sixteenth notes, and a bass line with eighth notes. Measure numbers 36 and 8 are indicated.

43

8

Musical notation for measures 43-49, featuring a treble clef, a key signature of one flat, and a common time signature. The notation includes a melodic line with eighth and sixteenth notes, and a bass line with eighth notes. Measure number 43 is indicated.

50

8

Musical notation for measures 50-56, featuring a treble clef, a key signature of one flat, and a common time signature. The notation includes a melodic line with eighth and sixteenth notes, and a bass line with eighth notes. Measure number 50 is indicated.

57

8

tr

tr

Musical notation for measures 57-63, featuring a treble clef, a key signature of one flat, and a common time signature. The notation includes a melodic line with eighth and sixteenth notes, and a bass line with eighth notes. Trills are marked with *tr*. Measure number 57 is indicated.

64

8

Musical notation for measures 64-70, featuring a treble clef, a key signature of one flat, and a common time signature. The notation includes a melodic line with eighth and sixteenth notes, and a bass line with eighth notes. Measure number 64 is indicated.

71

8

8

8

Musical notation for measures 71-77, featuring a treble clef, a key signature of one flat, and a common time signature. The notation includes a melodic line with eighth and sixteenth notes, and a bass line with eighth notes. Measure number 71 is indicated.